



1309 Elkhorn Drive
Vail, Colorado 81657
artinvail.com

Art in Public Places
970.479.2344
970.479.2166 fax

Call for Artists/Request for Qualifications Public Art at new Red Sandstone Elementary Parking Garage

Call summary:

The Town of Vail's Art in Public Places (AIPP) invites professional artists to submit their qualifications and images of integrated public art projects for consideration at Vail's Red Sandstone Elementary Parking Garage. The total budget is \$90,000 to commission public art for this project. AIPP has identified potential locations for this project including, but not limited to exterior wall locations, railing design, and a potential sculptural seating area. The selected artist(s) will work closely with the designers and Town of Vail design teams to create a cohesive pedestrian and vehicular experience where art complements design.

At an elevation of 8,150 feet, Vail is a popular year-round destination boasting 5,289 acres of skiable terrain. Annually, approximately 1.6 million people visit our world-class mountain resort community during the winter season and 1.2 million in the spring, summer, and fall seasons. Vail offers a combination of recreational and cultural amenities with an abundance of luxury and boutique accommodations, restaurants, spas, shops, and multiple events throughout the year.

Project description:

In May 2017 Vail Town Council directed staff to proceed with the design of a four-level, open air, 160 car parking structure on the Red Sandstone Elementary School site at an estimated budget of \$14.8 million. In addition public art, solar photovoltaic technology, and public restrooms will be included in the project.

Site description:

The location of the parking garage is south of the existing Red Sandstone Elementary School located at 551 N Frontage Rd W, Vail, CO 81657. The garage will be highly visible from the N. Frontage Road, adjacent I-70 highway, and nearby pedestrian/bicycle path.

Artwork Criteria:

- **Quality and Innovation:** The consideration of highest priority is the inherent artistic excellence and innovation of the artwork.
- **Timelessness:** Each artwork should be viewed as a long-term acquisition that should have relevance aesthetically to the community in future years. Due to the high visibility of public art by residents and guests who frequent public places, artworks should be selected that reflect enduring artistic quality.
- **Compatibility with Site:** Works of art should be compatible in style, scale, material, form, and content with their surroundings, and should form an overall relationship with the site.
- **Permanence:** Works of art shall have structural and surface soundness. It shall also be resistant to theft, vandalism, and weathering. Artworks shall not require excessive maintenance nor repair costs. Artworks that require frequent maintenance are discouraged.
- **Public Safety:** Artwork shall not create inordinate safety problems or liability problems for the general public or Town of Vail.

Artwork Locations:

- Potential locations for this project include, but are not limited to exterior wall locations, pedestrian railing design, and a nearby sculptural seating area.

Artist Qualification Submittal Materials

- Letter of interest indicating your vision and approach for the project (limit one page).
- A professional resume/CV with qualifications (limit two pages).
- Three professional references with current contact information from completed or current projects.
- Visual support materials of previous work (10 images max) – jpegs (not to exceed 8 MB), cds, prints, website, . Please note that **ZIP files are not accepted**. If your files are too large, you may also send via dropbox or another similar means.
- Annotated image list to accompany any submitted images.
- Mailed materials will not be returned without a self-addressed stamped envelope.

If submitting as an artist team, the team must submit a resume for each team member.

Budget:

- The total budget for the project is \$90,000.*
- Budget is inclusive of all artist's fees, travel, design, insurance, permits, fabrication, labor, installation, and contingency.

Anticipated Timeline:

- Deadline for entry: February 23, 2018
- Construction commences April 2018 with expected completion November 2018.

The Town of Vail's Art in Public Places Board will review materials submitted by artists and their criteria for qualifications. Artists whose work would be of further interest will be contacted.

Contact:

Materials may be emailed to: artinvail@vailgov.com. The subject must read **RSE Parking Structure**.

Materials may be mailed to:

Art in Public Places Coordinator
Town of Vail
1309 Elkhorn Drive
Vail, CO 81657



SCHEMATIC
DESIGN SET

STAMP

551 N Frontage Rd W
Vail, CO 81657

Site Render
Red Sandstone Elementary School Renovation +
Parking Garage - Vail Potato Patch Block 2 Lot 8

PS9.04
1827.02-1
09/27/17
Revised

TAB Associates, Inc.
56 Edwards Village Blvd Suite 210
Edwards, CO 81632 970-765-1740
HA SELDEN
Landscape Architecture

DLR Group
Architecture Engineering Planning Interiors
© 2017, DLR Group, Inc., a Colorado corporation. ALL RIGHTS RESERVED

TO REMAIN

this railing is your typical highway railing for vehicle barrier, so probably more difficult to design to.

this railing is shown on next page

↑ foot contours

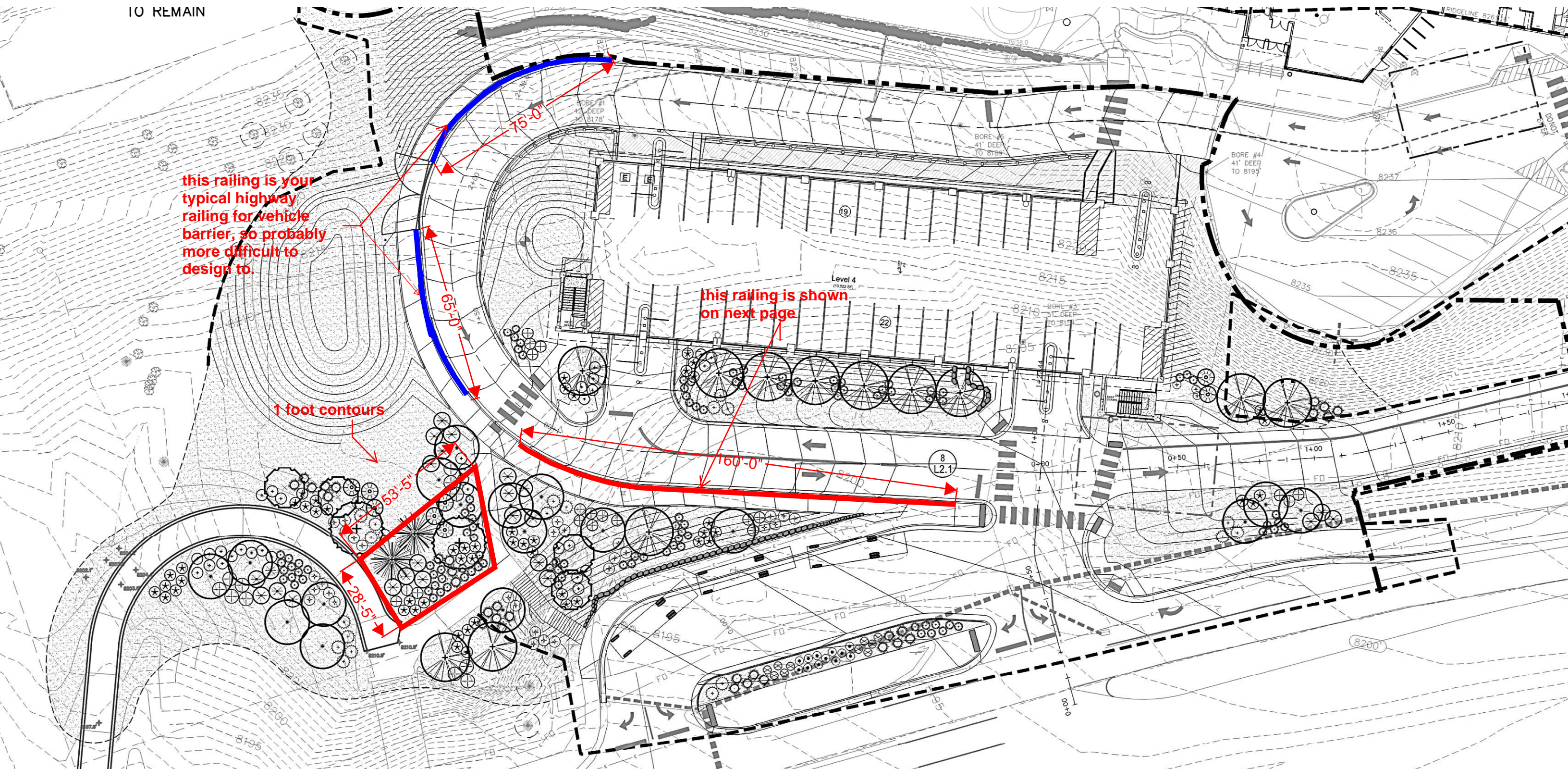
53'-5"

28'-5"

160'-0"

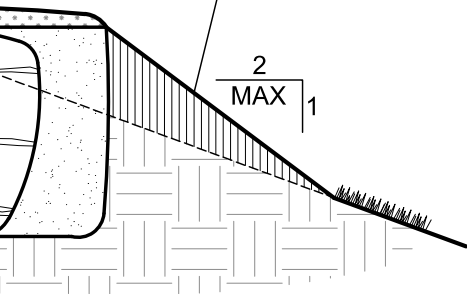
75'-0"

65'-0"

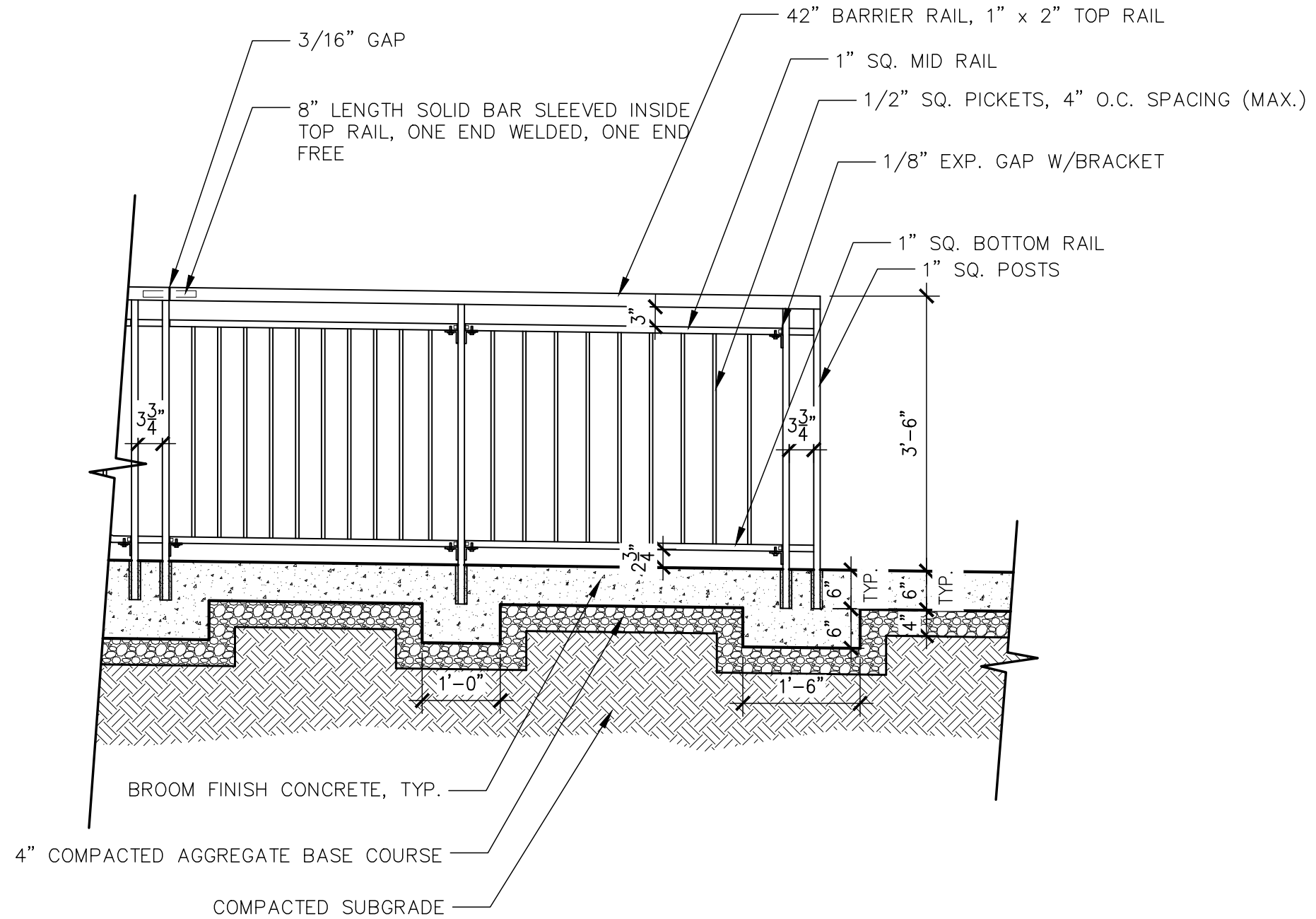


—SET TREE PLUM TO LEVEL

FILL DOWNHILL SIDE OF ROOTBALL. COVER EXPOSED ROOTBALL 6" MIN.



TREE INSTALLATION, MULCHING, ETC. APPLY TO ALL TREE TYPES SLOPES LESS THAN 2:1.

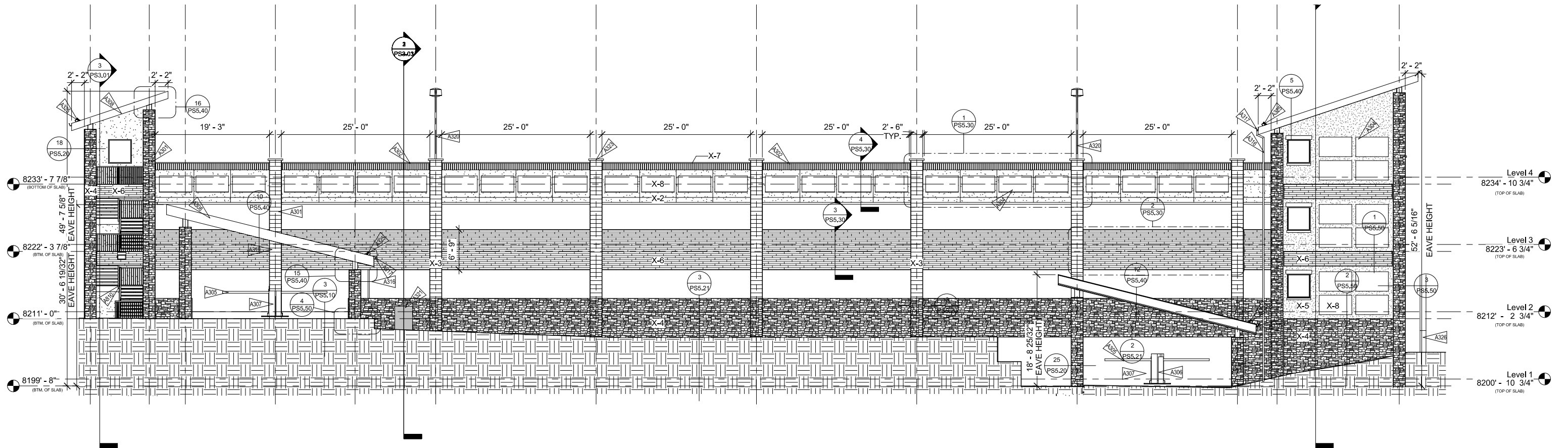


SLOPE

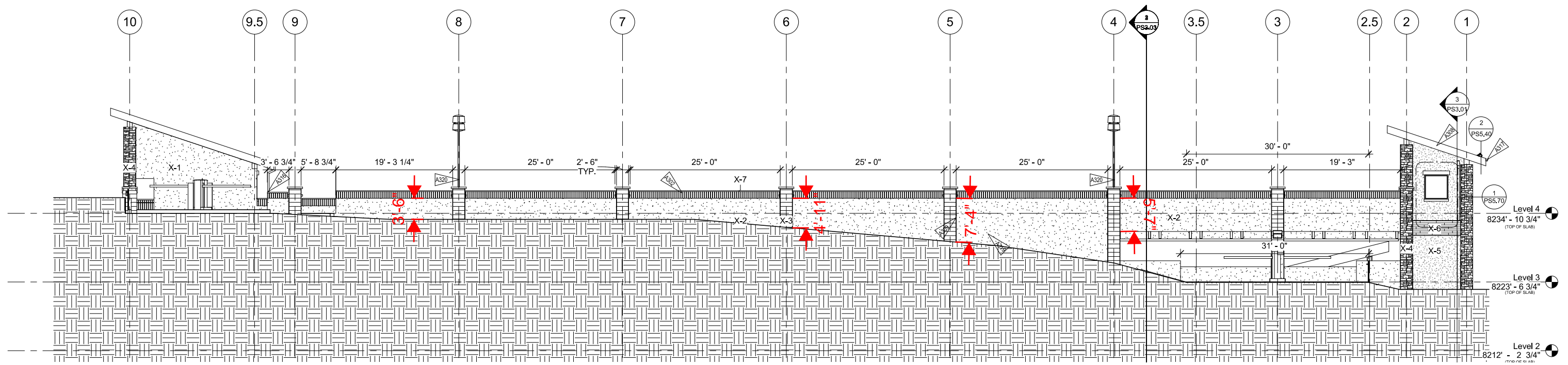
NOT TO SCALE

8 PEDESTRIAN RAILING

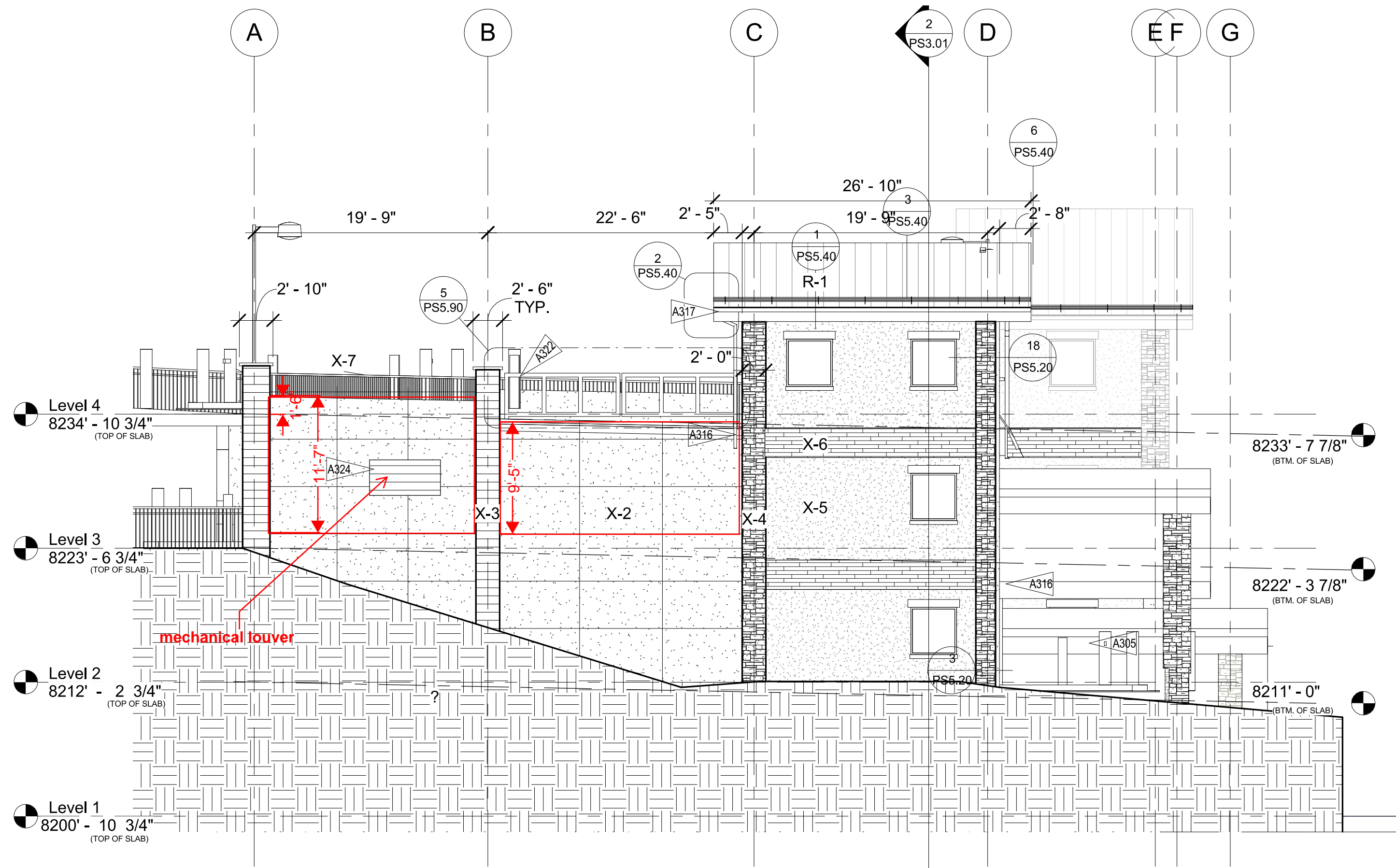
SCALE: 3/4"=1'-0"



1 South Elevation
 PS2.01 1/8" = 1'-0"



North Elevation



West Elevation