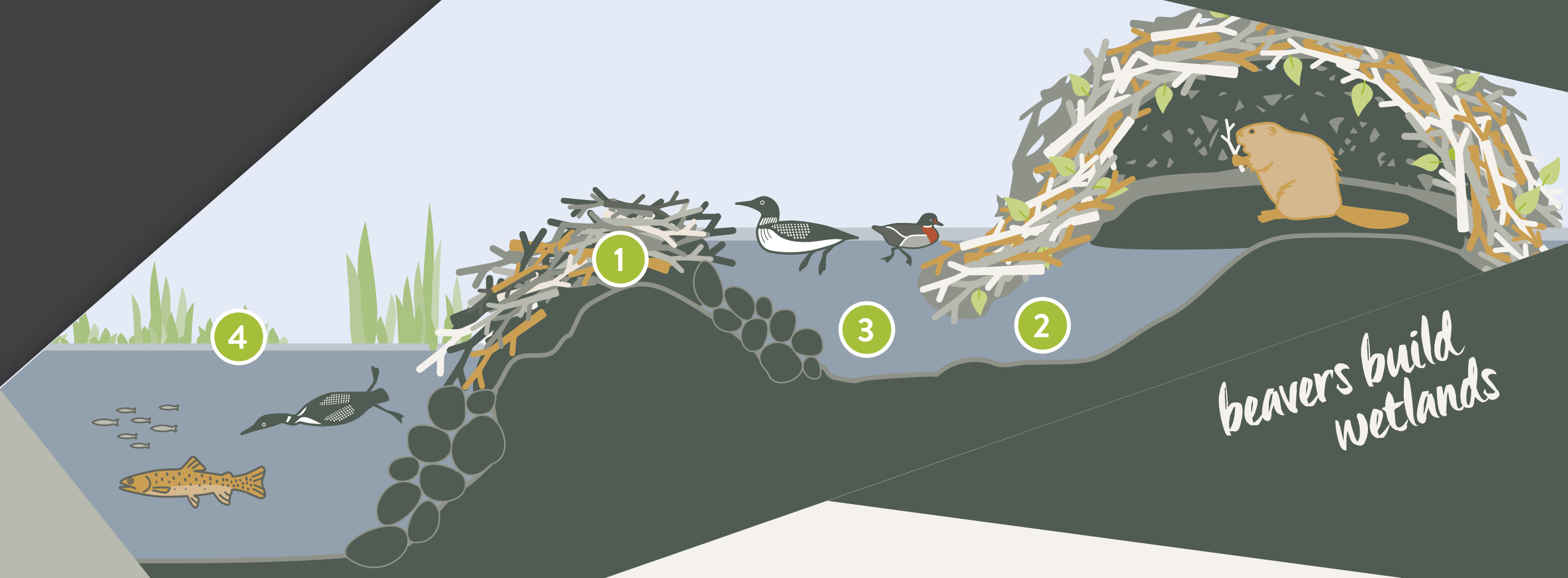


OF ALL THREATENED SPECIES DEPENDING ON WETLANDS TO SURVIVE 1/3



## A GOOD NEIGHBOR: THE BEAVER

**Creekside wetlands and ponds are essential to a healthy watershed.** As water percolates through a wetland, the ecosystem's soil, plant roots, and even bacteria filter pollutants. A wetland like the one in front of you helps clean the water flowing to Gore Creek.

Beavers are often thanked for healthy wetlands. They are a keystone species—an animal essential to the existence of an ecosystem. Natural engineers, beavers build habitat for themselves and a diversity of other animals, from common waterfowl to endangered species like the boreal toad.

- 1 Beavers build dams to make ponds.
- 2 Deep water protects underwater entrances to their lodge.
- 3 The ponds slow water, creating wetlands that stop flooding and capture pollutants.
- 4 Fish, fowl, insects, and predators thrive in the beaver habitat.

### BOREAL TOAD

Boreal toads are endangered in Colorado. They breed in only two locations in Eagle County—and one of them is in this pond. Without the beaver, the boreal toad would lose its breeding ground. Protecting the beaver helps protect this species from extinction.

### BEAVER ADAPTATIONS

Ability to hold their breath underwater for 15 minutes

Dense, oily, waterproof fur

Strong teeth for cutting and chewing

COURTESY STRONGIE, NATIONAL PARK SERVICE, JEFFREY FRANK PUCHTMILLER

BOREAL TOAD LIFECYCLE



### Gore Creek highlights



### HELP WETLANDS AND BEAVERS DO THEIR WORK.

- Don't disturb beavers and leave their dams intact.
- Stay away from revegetation sites.
- Keep pets out of the pond—especially in June when the boreal toad breeds.
- Watch for boreal toads on the bike path. They cross here on their way to the forest where they spend their adulthood.

Gore Creek is your creek