

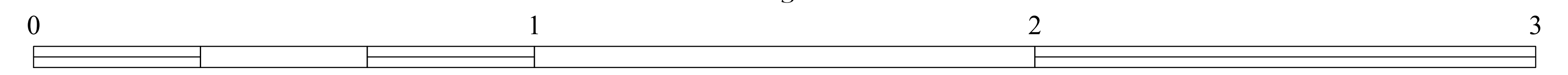
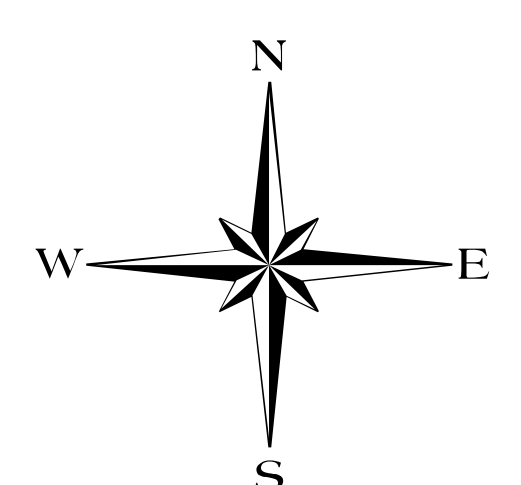
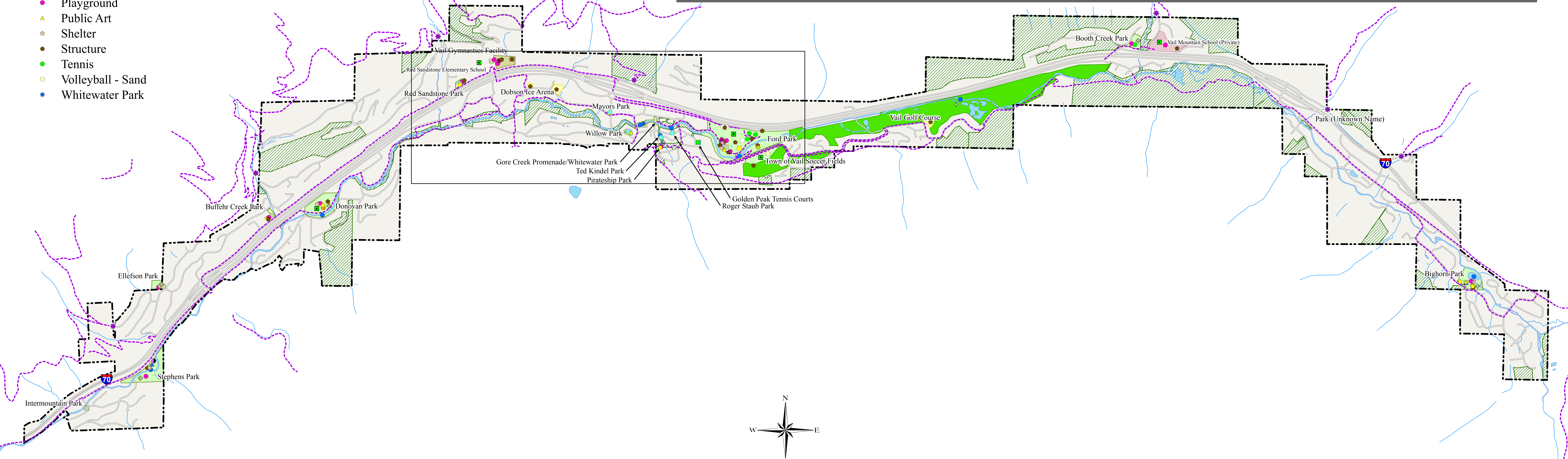
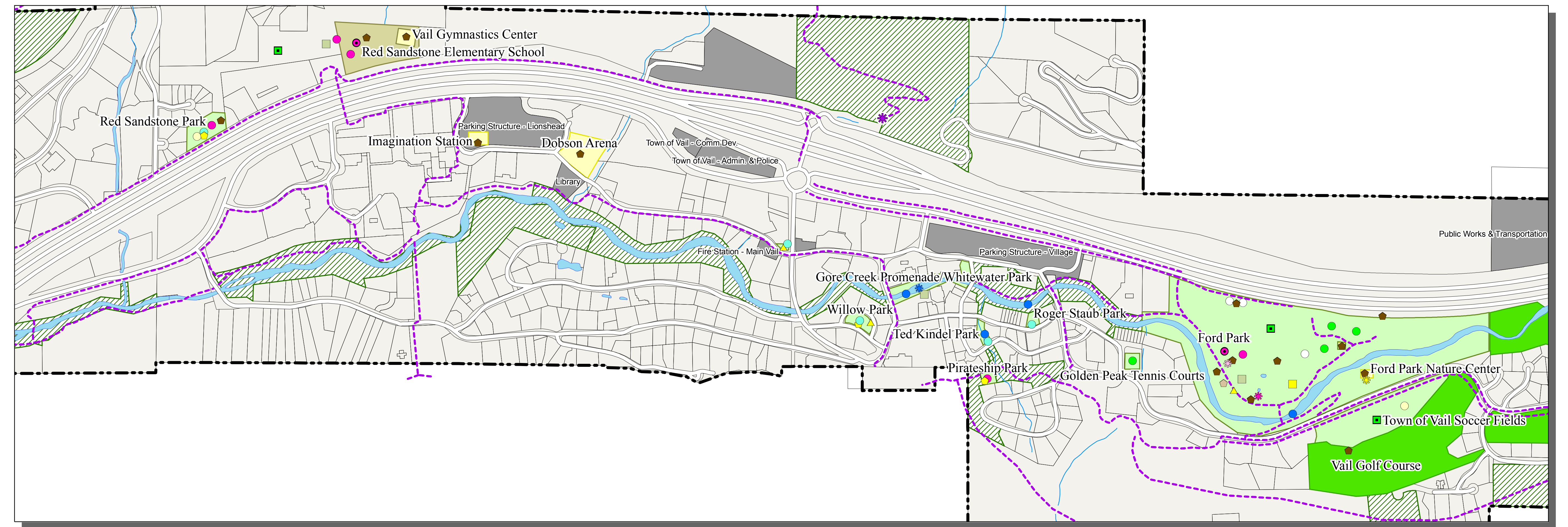
LEGEND

GRASP® Inventory

- ◆ Alpine Garden
- Amphitheater
- Ballfield
- Basketball
- ◆ Disk Golf
- ◆ Driving Range
- ◆ Fitness Path
- ◆ Golf
- ◆ Interpretive Path
- Multipurpose Field
- ◆ Natural Area
- ▲ Off Leash Area
- Open Turf
- Open Water
- Passive Area
- Picnic Area
- Play Pad
- Playground
- ▲ Public Art
- Shelter
- Structure
- Tennis
- Volleyball - Sand
- Whitewater Park

Recreation Lands & Facilities

- Park
- Golf Course
- Indoor Facility
- Unclassified Park Land
- Public School
- Private School
- ◆ Trailheads - USFS
- Trail Network



Map Scale In Miles - Primary Frame

Map Produced For Town Of Vail & Vail Recreation District - Eagle County, Colorado - By The GRASP® Team
 This Map Is Intended For Planning & Discussion Purposes Only - Please Refer To The Project Document For Map Details
 Legend Elements May Vary In Size From Those Shown On Map
 GIS Data Sources May Include: Eagle County, Town of Vail, US Census, ESRI, GRASP® Team
 Copyright© 2007 Town Of Vail & Vail Recreation District - Map Revised - February 2007